

Ett parti från KM 1948

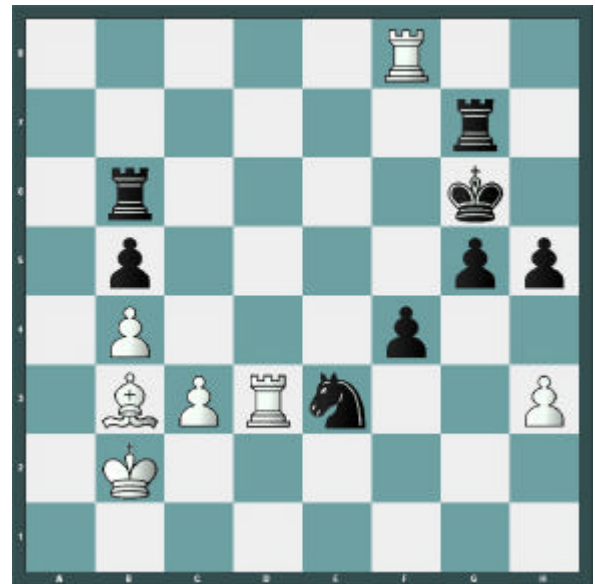
Segerhäll, Anton - Björk, Hugo [A02]
KSK:s KM Stockholm, 25.11.1948
[Fritz 8 (60s)]

A02: Bird

Den sjufaldige klubbmästaren Segerhäll gick bort 1973 och en nekrolog står att finna i Kristallarens värnummer samma år. Där återfanns också detta parti mot en annan ledendar i klubben.

1.f4 e5 2.fxe5 d6 3.exd6 Lxd6 4.Sf3 Sh6 5.d4 Sg4 6.Dd3 f5 7.Lg5 Dd7 [7...Le7 8.h3 Sf2 9.Kxf2 Lxg5 10.Db3±] 8.e4 0-0? [1 8...h6!? 9.Ld2 fxe4 10.Dxe4+ De6+-] 9.e5+- Le7 10.Lxe7 [10.Lf4 De8+-] 10...Dxe7 11.h3 Sh6 12.Sc3 c6 13.0-0-0 Sa6 14.a3 Sc7 15.Dd2 Le6 16.Sg5 [16.Dg5 Dd7+-] 16...Ld5 [1 16...Tad8!?±] 17.Sxd5+- cxd5 18.Kb1 [18.Ld3!? Sf7 19.Sxf7 Txf7+-] 18...b5± 19.Ld3 Sf7 [1 19...b4!? 20.axb4 a5±] 20.Sxf7+- Txf7 21.Thf1 Dd7 [21...Taf8 22.g4 fxc4 23.Txf7 Txf7 24.hxc4+-] 22.Tde1 [22.g4 fxc4 23.Txf7 Dxf7 24.hxc4 a5+-] 22...De6 [22...Taf8 23.De2 De7 24.g4+-] 23.Db4 [23.g4 fxc4 24.Txf7 Dxf7 25.hxc4 a6+-] 23...a6 [23...f4 24.g3 fxc3 25.Txf7 Dxf7 26.Tg1+- (26.Lxb5 g2 27.Lc6 Tf8μ)] 24.Dd6 g6 25.Db4 [25.g4 f4+-] 25...Td8 [25...a5 26.Dd6+-] 26.Dd2 Tdf8 27.Df4 [1 27.h4!? h5+-] 27...Db6 28.c3 [28.h4!? b4 29.axb4+-] 28...a5± 29.Dd2 Se6 30.Dc2 [30.g4 f4²] 30...Tb7 [30...b4 31.Ka1=] 31.b4 [31.Ka1 b4 32.g4 f4²] 31...axb4 32.axb4 Ta8 33.Kb2 Sxd4 34.Df2 [34.cxd4 Dxd4+ 35.Kb3 Tba7+-] 34...Se6 35.Dxb6 Txb6 36.Ta1 [36.g4 fxc4 37.hxc4 Sg5²] 36...Tab8 [36...Txa1 37.Txa1 Sf4 38.Lf1=] 37.Ta7² T8b7 38.Tfa1 Sc7 [38...Kf7 39.T1a6 Sf4 40.Lf1 Txa7 41.Txb6²] 39.T7a5 Kf7 40.Te1 [40.g4 fxc4 41.hxc4 Ke6=] 40...Se6 41.Lc2 [41.Tf1 Sg7=] 41...Sf4

[41...Sg5³] 42.Td1 [1 42.g4!? Sg2 43.Te2=] 42...Ke6μ 43.Ta8 [43.Td2!?μ] 43...Sxc2+- 44.Te8+ Kf7 45.Th8 Kg7 46.Td8 Se3 47.Td3 f4 48.Lb3 Te7 49.Lxd5 Txe5 50.Td7+ [50.Lf3 Sc4+ 51.Kc2 Ta6 52.T3d7+ Kf6+-] 50...Kf6 51.Lb3 Te7 52.Td8 g5 53.Tf8+ [53.T3d4 h6+-] 53...Kg6 54.Tg8+ [54.h4 h6+-] 54...Tg7 [1 54...Kh5 55.Ld1+ Kh4 56.Tdd8 Sc4+ 57.Kb3+-] 55.Tf8 [55.Txc7+ Kxc7 56.Td7+ Kg6 57.La2+-] 55...h5 [1 55...Kh5 56.Te8 Tbb7 57.Tdxe3 fxe3 58.Txe3 Tbe7+-]



56.Txe3!+- Td7 [56...fxe3 57.Lc2+] 57.Lc2+ Kg7 58.Tee8 Td2 59.Tf5 Kg6 [59...g4 60.Txh5 gxh3 61.Th7+ Kf6 62.Tf8+ Ke6+-] 60.Tg8+ [60.Tg8+ Kh6 61.Tfxg5+-] 1-0